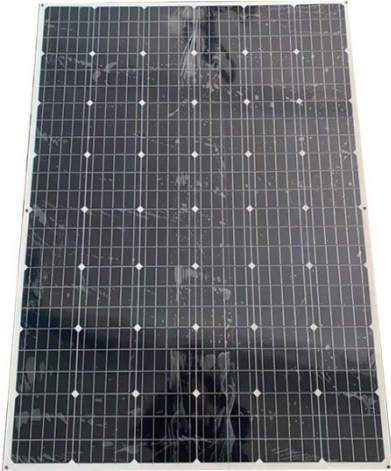


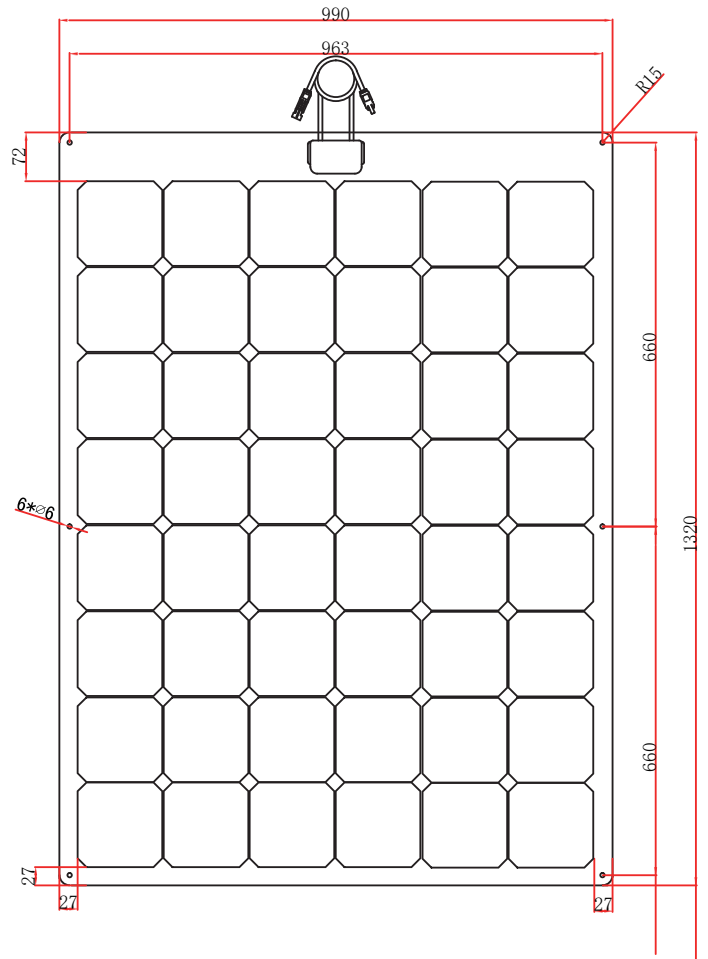
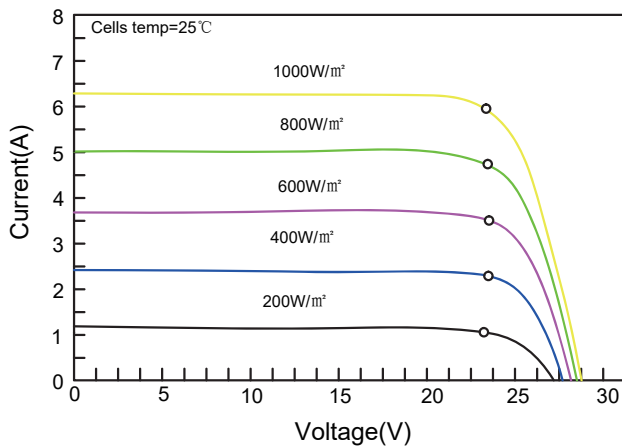
FL-250W/36V

High Efficiency Flexible Solar Modules

Module Diagram



Characteristics



Electrical Characteristics

Product code	FL-250W/36V
Maximum power(Pmax)	250W
Voltage at Pmax(Vmp)	37.3
Current at Pmax(Imp)	6.70
Open-circuit voltage(Voc)	45.3
Short -circuit current(Isc)	7.05
Power temperature coefficient	-0.38%/°C
Voltage temperature coefficient	-0.27%/°C
Current temperature coefficient	+0.05%/°C
Cells Efficiency(%)	23.70%
The maximum system voltage	45VDC(IEC)
Output power tolerance	±3%

Specifications

Cells	A grade solar cell
No.of cells and connections	60(6X10)
Module dimension	1320*990*3mm
Weight	4.15KG
Certification	CE,RoHS,ISO