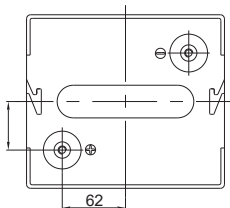


GENERAL FEATURES

- **Long Service Life** - Thick plate design and efficient gas recombination yield a service life expectancy of up to 10 years in standby mode.
- **Low Internal Resistance** - Superb high-rate discharge characteristics ensure reliable performance in UPS and Telecom applications.
- **Maintenance-Free, Non-Spillable** - Proven VRLA technology guarantees safe operation without maintenance and 'non- restricted article' status for transportation.
- **Low Self-Discharge** - Lead-calcium alloy grids and use of high purity lead account for superior shelf-life characteristics permitting storage for extended periods of time.
- **Designed-In Reliability** - Cutting-edge manufacturing and process control combined with meticulous quality assurance procedures guarantee consistent and dependable performance

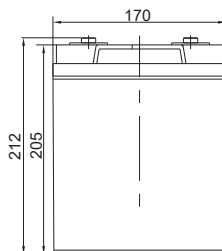
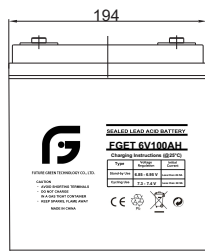
GENERAL FEATURES

mm



Unit: mm

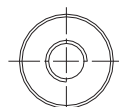
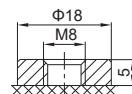
Length	194±1
Width	170±1
Height	205±1
Total Height	212±1
Weight(kg)	16.5±3%



TERMINALS

mm

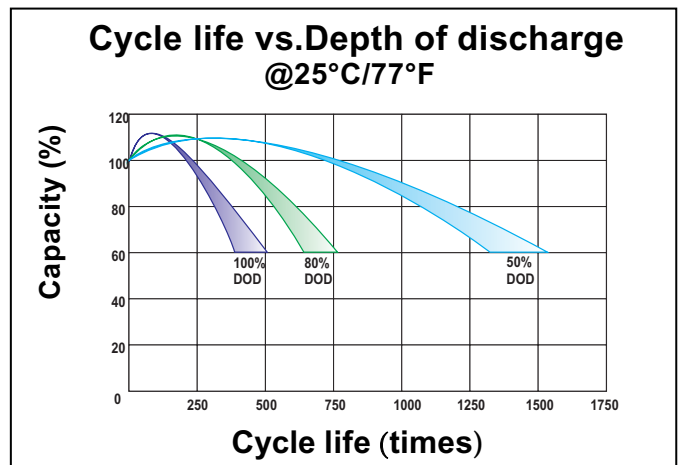
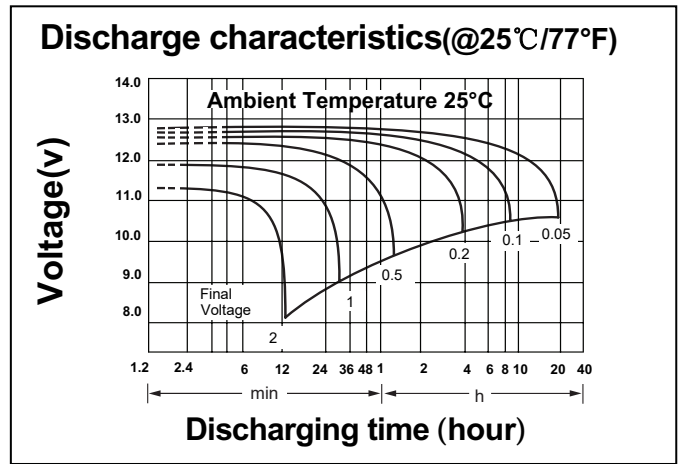
- T11 - THREADED INSERT - 8mm STUD



F14 Terminal

PERFORMANCE SPECIFICATIONS

Nominal Voltage	6V(3 cells)	
Design Floating Life @25°C	12 Years	
Nominal Capacity @25°C	20 hour rate	100.0Ah
	5.0A to 5.4V	
	10 hour rate	87.7Ah
	8.77A to 5.4V	
	5 hour rate	79.5Ah
	15.9A to 5.1V	
	3 hour rate	69.0Ah
	23.0A to 4.95V	
	1 hour rate	23.1Ah
	23.1A to 4.80V	
Internal Resistance	Full Charged Battery@25°C	<5mΩ
Energy Density (20-hr. rate)	85.82W-h/l	
Specific Energy (20-hr. rate)	36.37W-h/kg	
Shelf Life (nominal capacity at 20°C)	1 Month	97%
	3 Months	91%
	6 Months	83%
Standby Use Charge (Constant Voltage) @25°C	Initial Charging Current	
	Less than 22.5A Voltage 6.85 - 6.95V	
Cycle Use Charge (Constant Voltage) @25°C	Initial Charging Current	
	Less than 22.5A Voltage 7.30 - 7.40V	
Operating Temperature Range	Charge	0°C to 50°C
	Discharge	-20°C to 60°C



CONSTANT CURRENT DISCHARGE RATINGS (Amperes at 25°C)

F.V/Time	10MIN	15MIN	30MIN	1HR	2HR	3HR	4HR	5HR	8HR	10HR	20HR
1.60V	185.4	145.0	95.4	55.9	33.4	23.1	19.1	16.1	11.0	9.12	5.50
1.65V	176.4	142.1	93.8	55.6	33.2	23.0	19.0	16.0	10.9	9.03	5.30
1.70V	170.1	139.8	93.0	55.1	32.9	22.8	18.9	15.9	10.8	8.95	5.15
1.75V	158.9	134.7	93.2	54.6	32.7	22.7	18.8	15.7	10.7	8.86	5.00
1.80V	146.6	125.6	92.5	53.3	32.1	22.1	18.3	15.4	10.6	8.77	4.70