

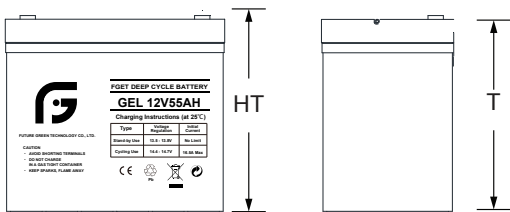
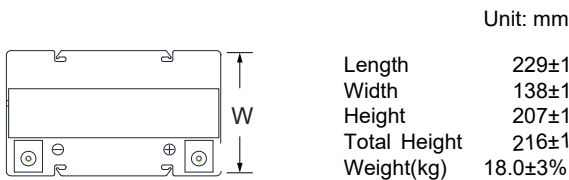
GENERAL FEATURES

- **GEL Technology** - DG batteries comes from the internationally superior Gel technology. It is ideal for standby or frequent cyclic discharge applications under extreme environments.
- **Long Life Time** - By using strong grids, high purity lead and patented Gel electrolyte, the DGseries offers excellent recovery after deep discharge under frequent cyclic discharge use, and can deliver 400 cycles at 100% DOD.
- **Maintenance-Free, Non-Spillable** - Proven VRLA technology guarantees safe operation without maintenance and 'non- restricted article' status for transportation.
- **Excellent Recovery from Deep Cycle** - Unique technical processes are used into the grid alloy and electrolyte additive, in this case the battery can be recharged after being over-discharged.
- **Designed-In Reliability** - Cutting-edge manufacturing and process control combined with meticulous quality assurance procedures guarantee consistent and dependable performance

PERFORMANCE SPECIFICATIONS

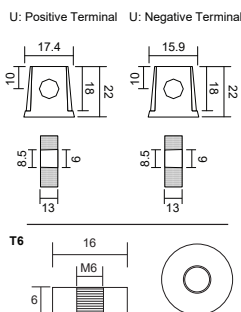
Nominal Voltage	12V(6 cells)	
Design Floating Life @25°C	12 Years	
Nominal Capacity @25°C	20 hour rate	55.00Ah
	10 hour rate	53.70Ah
	5 hour rate	47.10Ah
	3 hour rate	42.93Ah
	1 hour rate	33.34Ah
Internal Resistance	Full Charged Battery@25°C <6.0mΩ	
Energy Density (20-hr. rate)	96.69W-h/l	
Specific Energy (20-hr. rate)	36.67W-h/kg	
Shelf Life (nominal capacity at 20°C)	1 Month	97%
	3 Months	91%
	6 Months	83%
Max.Discharge Current@25°C	7 Min.	165.0A
Max Short-Duration Discharge Current	10 Sec	410.0A
Standby Use Charge (Constant Voltage) @25°C	Initial Charging Current	
	Less than 16.5A Voltage 13.6-13.8V	
Cycle Use Charge (Constant Voltage) @25°C	Initial Charging Current	
	Less than 16.5A Voltage 14.6-14.8 V	
Operating Temperature Range	Charge	0°C to 50°C
	Discharge	-20°C to 60°C

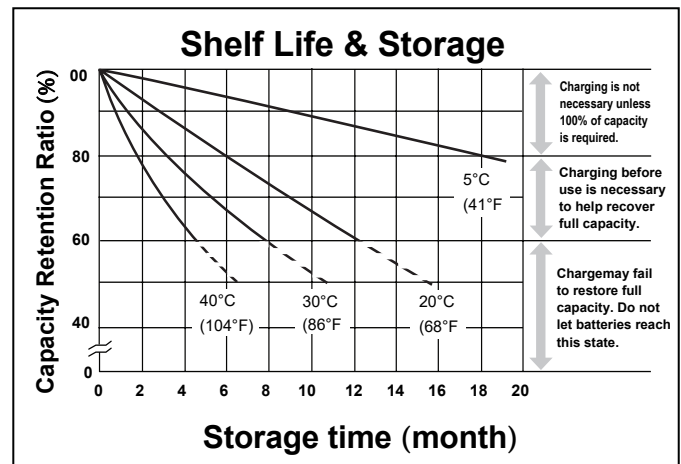
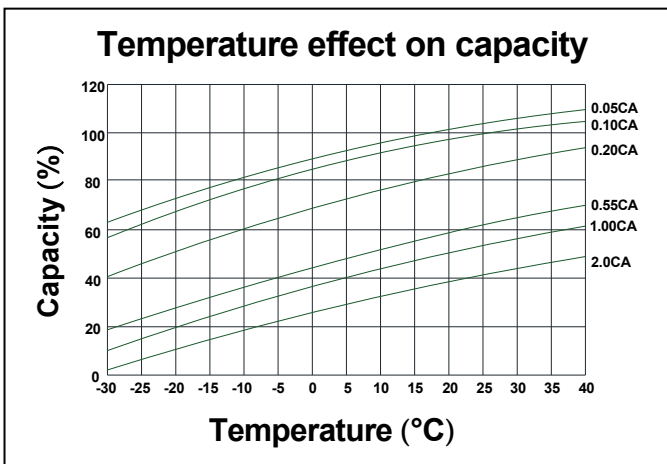
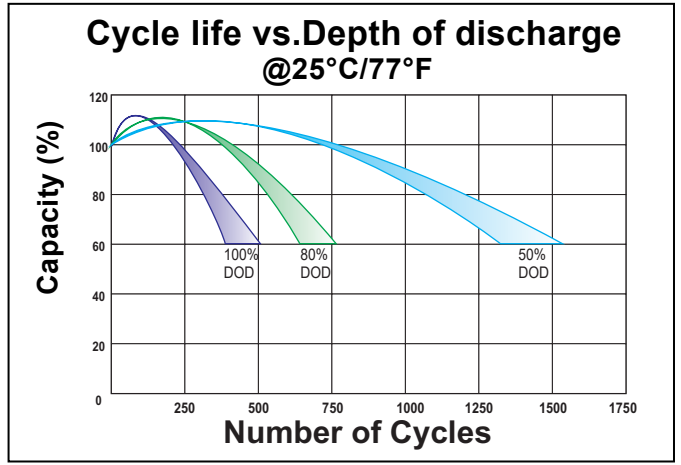
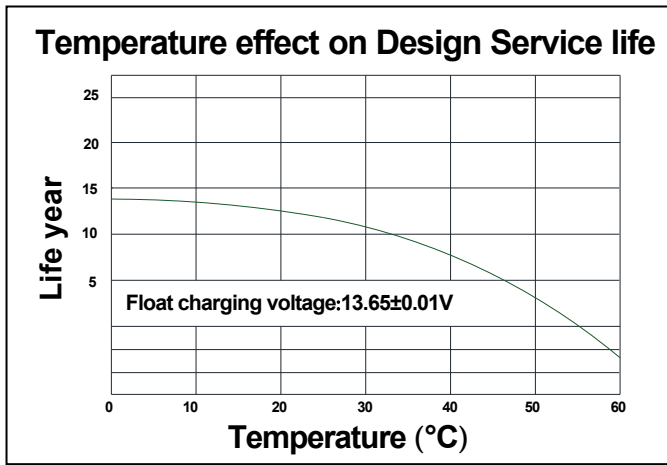
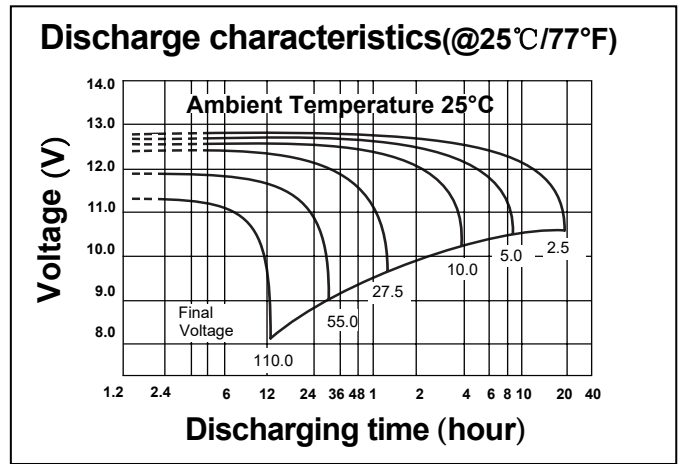
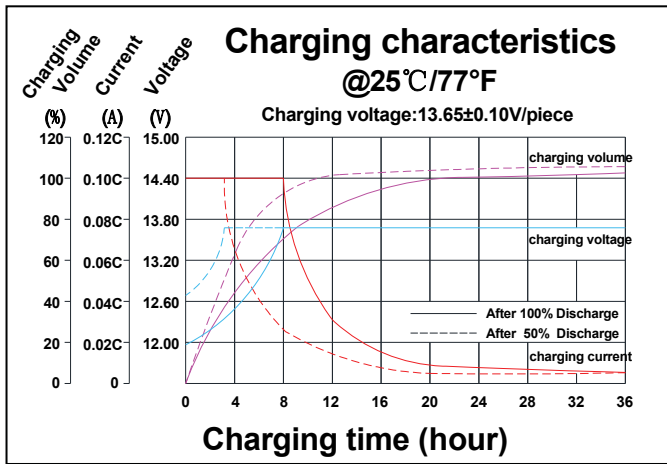
GENERAL FEATURES mm



TERMINALS mm

- U: Universal terminals: Heavy-duty posts with 'nut & bolt' fasteners
- T6: Threaded insert w. 6 mm stud fastener





CONSTANT CURRENT DISCHARGE RATINGS (Amperes at 25°C)

F.V/Time	5MIN	10MIN	15MIN	30MIN	1HR	2HR	3HR	4HR	5HR	8HR	10HR	20HR
9.60V	183.2	134.7	100.6	57.69	33.34	19.52	14.53	11.51	9.70	6.62	5.61	2.86
10.0V	176.4	130.3	97.55	56.48	32.71	19.19	14.31	11.35	9.58	6.55	5.55	2.83
10.2V	167.6	124.4	93.60	54.88	31.87	18.75	14.01	11.14	9.42	6.45	5.48	2.80
10.5V	155.8	116.6	88.29	52.70	30.73	18.15	13.61	10.85	9.20	6.31	5.37	2.75
10.8V	140.3	106.1	81.14	49.71	29.16	17.31	13.05	10.45	8.89	6.12	5.23	2.68
11.1V	119.2	91.75	71.28	45.49	26.93	16.12	12.24	9.86	8.44	5.84	5.01	2.58