

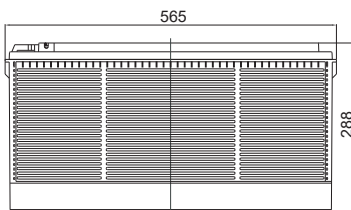
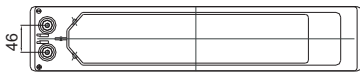
GENERAL FEATURES

- **GEL Technology** - The success of DG batteries comes from the internationally superior Gel technology. It is ideal for standby or frequent cyclic discharge applications under extreme environments
- **Front Access Connection** - Front access connection for fast, easy installation and maintenance with standard width for 19' and 23' ETSI racks.
- **Long Service Life** - Especially designed for telecommunication use with 10+ years design life in float service. By combining the newly developed paste formula with up-to-date GEL structures, this range features 12 years design life.
- **Maintenance-Free, Non-Spillable** - Proven VRLA technology guarantees safe operation without maintenance and 'non-restricted article' status for transportation.
- **Designed-In Reliability** - Cutting-edge manufacturing and process control combined with meticulous quality assurance procedures guarantee consistent and dependable performance

PERFORMANCE SPECIFICATIONS

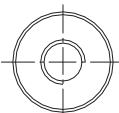
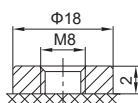
GENERAL FEATURES mm

		Unit: mm	
Length	565±1	Total Height	288±1
Width	110±1	Weight(kg)	43.0±1
Height	288±1		

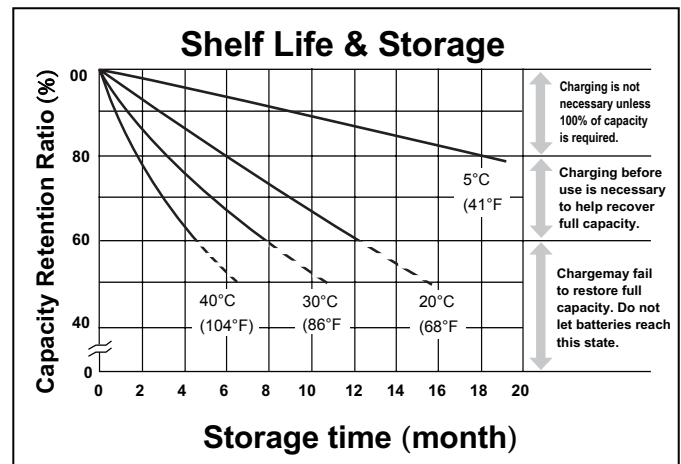
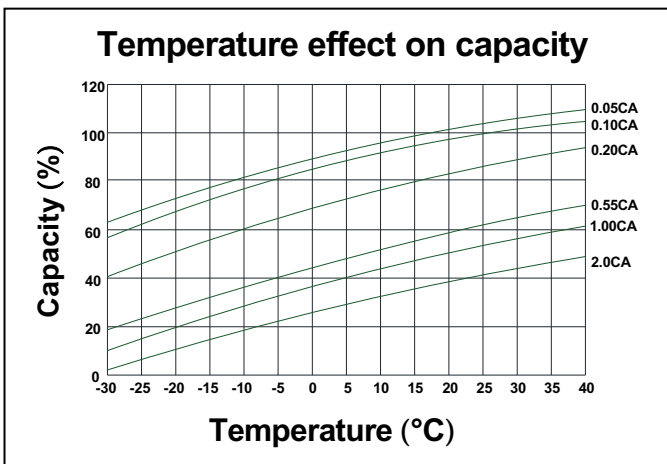
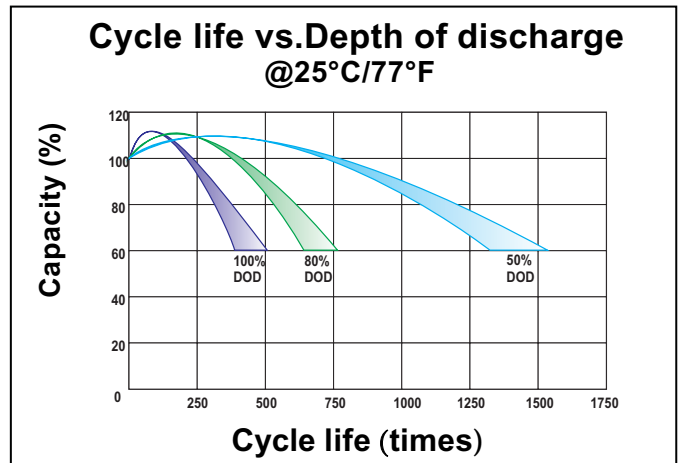
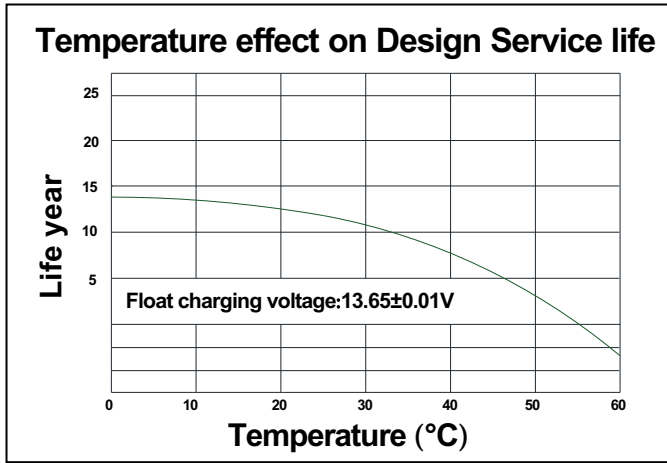
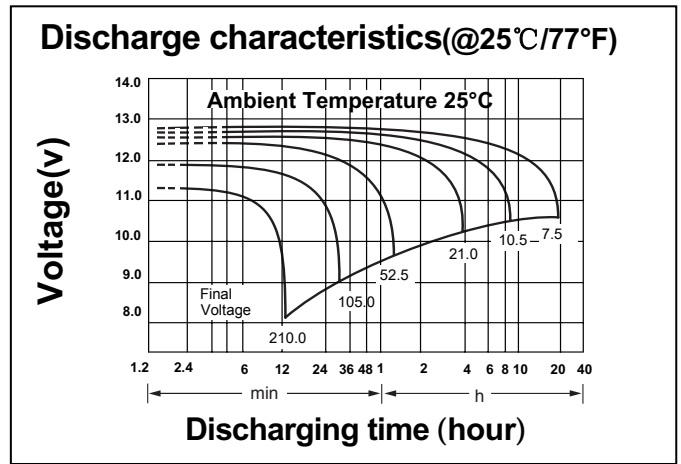
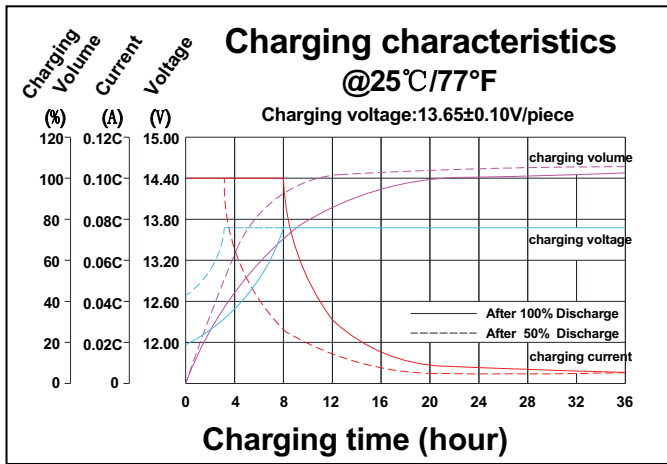


TERMINALS mm

F9 Terminal



Nominal Voltage	12V(6 cells)	
Design Floating Life @25°C	12 Years	
Nominal Capacity @25°C	20 hour rate 7.5A to 10.50V	150.0Ah
	10 hour rate 13.0A to 10.50V	130.0Ah
	5 hour rate 22.7A to 10.50V	113.5Ah
	3 hour rate 34.1A to 9.60V	102.3Ah
Internal Resistance	1 hour rate 81.9A to 9.60V	81.9Ah
	Full Charged Battery@25°C	<6.0mΩ
Energy Density (20-hr. rate)	100.56W-h/l	
Specific Energy (20-hr. rate)	41.38W-h/kg	
Shelf Life (nominal capacity at 20°C)	1 Month	97%
	3 Months	91%
	6 Months	83%
Max Short-Duration Discharge Current	5 Sec	1500A
Standby Use Charge (Constant Voltage) @25°C	Initial Charging Current Less than 30A Voltage 13.6 - 13.8V	
	Cycle Use Charge (Constant Voltage) @25°C Initial Charging Current Less than 31A Voltage 14.4 - 14.9V	
Operating Temperature Range	Charge	-20°C to 50°C
	Discharge	-40°C to 60°C



CONSTANT CURRENT DISCHARGE RATINGS (Amperes at 25°C)

F.V/Time	15MIN	30MIN	1HR	2HR	3HR	4HR	5HR	8HR	10HR	20HR
1.60V	205.2	137.5	83.8	50.2	34.7	28.4	23.3	16.0	13.5	8.25
1.65V	201.0	136.4	83.5	49.8	34.5	28.3	23.1	15.9	13.4	7.95
1.70V	197.9	135.5	82.7	49.4	34.3	28.2	23.0	15.8	13.3	7.73
1.75V	190.6	133.4	81.9	49.0	34.1	27.9	22.7	15.6	13.2	7.50
1.80V	177.7	128.8	80.0	48.2	33.2	27.2	22.3	15.4	13.0	7.05
1.85V	161.3	121.8	76.0	46.0	31.8	25.9	21.3	14.7	12.6	6.75